

Creating great
experiences
since 1996 in
Patagonia



TREKKING
VALLEYS OF THE W



NAVIGATION
GREY LAKE



SIGHTSEEN
SALTO GRANDE

Valleys of the W



“My friends and I booked the *Valleys of the W* trip. The booking process was very pleasant. The tour itself was too outstanding. The guide was friendly, professional, and responsible. Each member in our group had different level of hiking experiences, yet he was able to ensure everyone had a good time. We all had a memorable trip, and I would recommend your company to all.”

Thomas Chang

Itinerary

Day 1

Our guide will meet you at the Punta Arenas airport. Transfer to Puerto Natales, a three-hour drive through the Patagonian pampa. Lodging in Puerto Natales at Natalino hotel or similar. Dinner and meeting to discuss trip program. (D)

Day 2

Transfer by van to Torres del Paine National Park. This is a two hour journey crossing the pampa Patagonica. Arrival at Torres del Paine by main entrance of Amarga lake. We will begin trekking to the Ascencio Valley where from above you see the river (of the same name) running wildly past refugio Chileno. After a quick stop here we will continue through a forest of the native Lenga (Beech) trees until reaching the glacial moraine. From here it's a 1 hour trek to the top where the towers appear from nowhere! This trek is spectacular where you get to view the 3 pink granite towers with its glacial lake below that made the park famous. (8 hours round trip, 20 KM). Transfer to Serrano river area, dinner and night at refugio Nash-Serrano. (B/L/D)

Day 3

Transfer to Pudeto, cross Pehoe lake by catamaran. Trek to the French Valley. This valley is the most beautiful in the park and one of the most unique in the world. Its surrounded by hanging glaciers (where you can see & hear the ice calving off at various intervals) and an amphitheater of granite walls and spires. There are amazing views throughout this trek and the further you trek into the valley the better they become! For this day we will have two hiking options as well: A consists in getting to further end of the trail, to the British Camp, this is all the way to the end of this natural congregation of mountains. If we reach this point, we will have completed 24km and 7-8 hours hiking. Plan B consists on reaching to the French Valley Main Lookout, from this point you can appreciate the whole natural amphitheater created by glaciers millions of years ago, it is absolutely breathtaking. B you will have hiked for 5-6 hours and completed 16km. The options will depend on fitness level, timing and weather conditions. On the return journey you will notice the extraordinary turquoise colour of Lake Pehoe. Cross Lake Pehoe by catamaran, transfer to Serrano river. Dinner and night at refugio Nash-Serrano. (B/L/D)

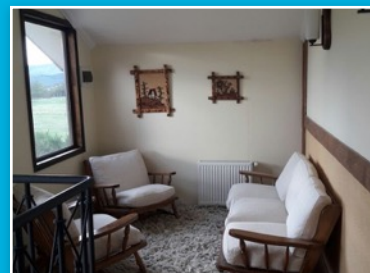
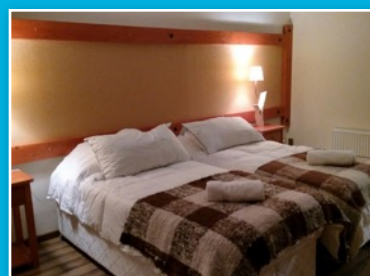
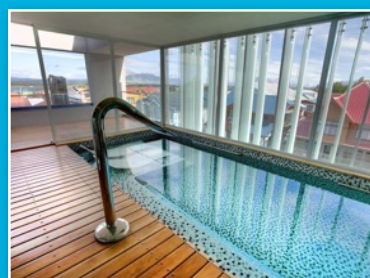
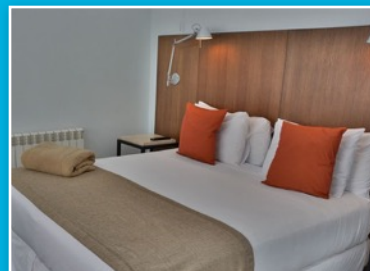
Day 4

Transfer to Pudeto, cross Pehoe lake by catamaran. We will trek along enchanting Lake Grey (3-4 hours 11 KM) with magnificent views of Glacier Grey and floating icebergs. Visit to the glacier lookout point and to the lakeshore for up-close views of vibrant-blue icebergs (Paine is a Tehuelche Indian word for "blue"). During the afternoon we will navigate aboard of the Grey III catamaran. Two hours navigation in this magic lake surrounded by ice bergs where the boat does a circuit right up to the front of the glacier whilst you stand on deck sipping your pisco sour served with glacial ice! Transfer from Grey lake to Puerto Natales. Farewell dinner and night at Natalino hotel or similar. (B/L/D)

Day 5

Breakfast, transfer to Punta Arenas. End of the trip. (B)

Accommodation Puerto Natales & Torres del Paine



Services Included

- Accommodation
- All Meals
- Private Guide
- Private Transportation
- Excursions
- Park Entrance Fees

Not Included

- Airfare
- Beverage during meals
- Insurance
- Gratuities

You can either do a private trip with a minimum of 2 people and we can then leave it open for others to join. There's not problem to tailor any of our programs to your needs.

Climate

Weather in Patagonia is a very important factor to consider. Remember that strong winds, rains and snow characterize this region. Winds blow from the northeast and the Pacific, crossing the southern Patagonian ice fields and forming continuous clouds that can result in nasty storms. Even if not very often good weather show up to give the pleasure to enjoy this place. Lenticular clouds will announce strong winds coming.

Temperature

Ambiance 12 to 18 degrees Celsius, with variations from 1 to 5 degrees(either higher or lower) depending on the seasons. The thermal sensation that the wind produces drops to 6 to 7 degrees. The water normally presents temperatures between 4 and 5 degrees Celsius. The sea registers temperatures between 7 and 8 degrees Celsius.

Accommodation in Torres del Paine

Refugio Nash-Serrano has a capacity of 20 guests accommodated in 5 rooms with private bathroom. Sheets, blankets and towels are provided. Sleeping bag is NOT required.